

The International Aerial Robotics Competition (IARC)

PRESENTS

A Guide to Huntsville





Welcome to HUNTSVILLE

WELCOME TO HUNTSVILLE ALABAMA

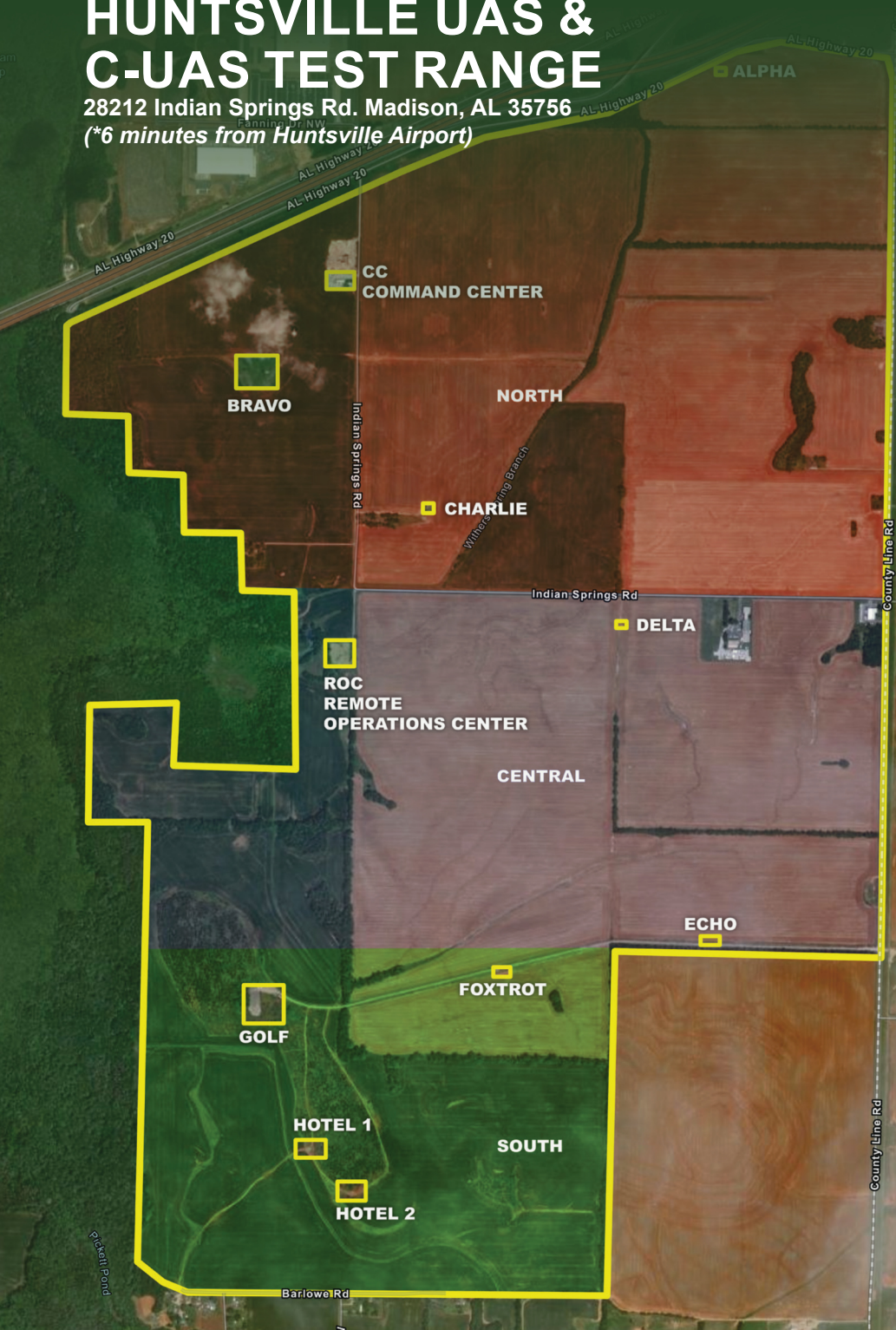
There are many things to do, places to see, and food to eat in Huntsville and the surrounding area. From nature preserves and hidden art trails to minor league baseball, a Robert Trent Jones golf trail, and the U.S. Space & Rocket Center, Huntsville has it all.

This guide breaks down the various things to do and places to eat by proximity to the Huntsville UAS & C-UAS Test Range: The Airport, Research Park, The Space & Rocket Center, and Downtown Huntsville. There is one more category in this guide dedicated to some of the hiking trails and nature preserves in Huntsville and the surrounding areas.

This guide is just a starting point, so feel free to forge your own path of exploration, and enjoy your stay to the fullest!

HUNTSVILLE UAS & C-UAS TEST RANGE

28212 Indian Springs Rd. Madison, AL 35756
(*6 minutes from Huntsville Airport)



Welcome to Huntsville Mural by Gracie Lenox Designs, Downtown Huntsville



EXCERPT FROM THE HUNTSVILLE WEBSITE

huntsvilleal.gov

The high-tech city of Huntsville which sprawls at the foot of a mountain in North Alabama is equally at home in the 19th century or the 21st. Huntsville's tourist attractions reflect the heritage of Alabama's first English-speaking city, the strife of the American Civil War, and the accomplishments of America's rocket scientists.

Huntsville's population truly reflects international cultures. Of the 190,000 city residents, more than 10 percent are natives of other countries. More than 100 languages and dialects are spoken here. In addition to the German rocket scientists who arrived in 1950, for example, Huntsville is home to the first U.S. plant built by Korea's largest corporation. Several Japanese-owned companies operate manufacturing plants here. Scores of foreign national flags ring the roof of the headquarters of an international computer manufacturing firm headquartered in Huntsville. Huntsville's visitor attractions offer a wealth of activities for the native and international visitor alike.



**HUNTSVILLE
INTERNATIONAL
AIRPORT**

TRAVEL INFORMATION

AIRPORT

Huntsville International Airport (HSV)

flyhuntsville.com/airline-info

Huntsville International Airport is the largest commercial airport in North Alabama, serving more than 1.4 million passengers annually. HSV has nonstop service to 14 destinations, including: Atlanta; Charlotte, Chicago, Dallas, Detroit, Houston, Las Vegas, Los Angeles, Miami, Orlando, Tampa, and two airports in Washington D.C. - Dulles and National.

Huntsville is serviced by several large carriers to include: Delta, American Airlines, Breeze, Frontier, Silver Airways, and United.

The Huntsville UAS & C-UAS Test Range is located directly next to Huntsville International.

RENTAL CARS

Huntsville Ground Transportation

flyhuntsville.com/ground-transportation

Huntsville has several rental car accommodations that can be picked up at the airport, including: Avis, Budget, Dollar, Enterprise, Hertz, National, & Thrifty.

REMINDERS

Vehicle Selection

When selecting the vehicle you plan to rent, remember the Huntsville UAS and C-UAS Test Range has some dirt and gravel roads. A vehicle, like a truck or SUV, that can handle such terrain is recommended.

Huntsville Weather

While Huntsville is not known for extreme weather, it can be unpredictable, so be sure to check the forecast before you arrive so you can pack and plan accordingly.

HOTELS

AIRPORT ADJACENT

Four Points by Sheraton

1000 Glenn Hearn Blvd.
Huntsville, AL 35824
256.772.9661

Distance to Test Range | 5.2 Miles or 10 Min.

Hampton Inn Madison Huntsville Airport

9225 Madison Blvd.
Madison, AL 35758
256.464.8999

Distance to Test Range | 3.4 Miles or 7 Min.

Hilton Garden Inn Madison Huntsville Airport

145 Graphics Dr.
Madison, AL 35758
256.325.1130

Distance to Test Range | 5.4 Miles or 10 Min.

WoodSpring Suites Huntsville Madison

120 Brazelton Circle
Madison, AL 35758
256.325.6300

Distance to Test Range | 4.9 Miles or 10 Min.



U.S. SPACE AND ROCKET CENTER ADJACENT

Huntsville Marriott at the Space & Rocket Center

5 Tranquility Base
Huntsville, AL 35805
256.830.2222

Distance to Test Range | 14 Miles or 14 Min.

Holiday Inn Express & Suites Huntsville - Space Center

5105 Governors House Drive SW
Huntsville, AL 35806
256.562.3400

Distance to Test Range | 11.9 Miles or 14 Min.

RESEARCH PARK ADJACENT

The Westin Huntsville

6800 Governors West, NW
Huntsville, AL 35806
256.428.2000

Distance to Test Range | 11.1 Miles or 18 Min.

Hyatt Place Huntsville / Research Park / Redstone

6860 Governors West, NW
Huntsville, AL 35806
256.666.9660

Distance to Test Range | 10.9 Miles or 18 Min.



Koi Fish Mural by Red Brick Strategies, Downtown Huntsville

THE AIRPORT

DINING

LOCAL FAVORITES

Greenbrier Restaurant

27028 Old Hwy 20
Madison, AL 35756
OldGreenbrier.com



Champy's Fried Chicken

8020 Madison Blvd.
Madison, AL 35758
ChampysOfMadison.com

J. Alexanders

380 Town Madison Blvd.
Madison, AL 35758
JAlexanders.com

Thai Elephant

8760 Madison Blvd.
Madison, AL 35758
ThaiElephantMadison.com

Miso Happy

104 Intercom Dr.
Madison, AL 35758
MisoHappyHuntsville.com

Honest Coffee Roasters

92 Shorter St.
Madison, AL 35758
HonestHSV.com

Little Libby's Catfish

234 Lime Quarry Rd.
Madison, AL 35758

SaZa Serious Italian

501 Town Madison Blvd.
Madison, AL 35758
SazaSeriousItalian.com

Oaxaca Flavors

15 Hughes Rd.
Madison, AL 35758
OrderOxacaFlavors.com

Apple Lane Farms

8580 Madison Blvd.
Madison, AL 35758
AppleLaneFarms.com

ABOUT THE CITY OF MADISON

The City of Huntsville and the City of Madison are in close proximity to each other, especially around the airport. The City of Madison is one of the fastest growing cities in the southeast. As it continues to grow, the restaurant scene changes too, so stay on the lookout for additional dining options!

Madison is full of charm! If you have time, a visit to the historic Madison Station is a great way to learn more about the history of the area! Madison Station also features a shopping district with local stores like Holtz Leather Co. or Madison Station Antiques.

ATTRACTIONS

SPORTS

Toyota Field

500 Trash Panda Way

Madison, AL 35758

milb.com/rocket-city/ballpark/special-events

Toyota Field, a state-of-the-art baseball stadium, is home to the Rocket City Trash Pandas! North Alabama's very own Double-A Minor League Baseball (MiLB) team was founded in 2020, and their unique name is a result of a "Name the Team" contest. The Trash Pandas' season runs from April to August at Toyota Field; however, if you can't catch a game of "America's Favorite Pastime" with the Trash Pandas, Toyota Field hosts other special events throughout the year.

Sunset Landing Golf Course

346 James Record Rd. SW

Huntsville, AL 35824

flyhuntsville.com/sunset-landing-golf-course

Sunset Landing Golf Course offers 6,803 yards of native grass fairways and bentgrass greens. A par 72 course with a slope of 71.9 and rating of 118 from the blacks and 66.9 and 108 respectively from the whites, Sunset Landing is ideal for seasoned golfers and beginners alike.





Thornton Research Park

A Development of
UAH Foundation



RESEARCH PARK

DINING

LOCAL FAVORITES

Rosie's

Mexican Cantina

6196 University Dr. NW

Huntsville, AL 35806

RosiesMexicanCantina.com



Kamado Ramen

1022 Mid City Dr.

Huntsville, AL 35806

KamadoRamen.com

The Camp

5909 University Dr. NW

Huntsville, AL 35805

ExploreTheCamp.com

Texas de Brazil

350 The Bridge Street, Suite 124

Huntsville, AL 35806

TexasDeBrazil.com

Ol' Heidelberg

6125 University Dr. NW

Huntsville, AL 35806

OlHeidelberg.com

Connors Steak & Seafood

345 The Bridge Street

Huntsville, AL 35806

ConnorsRestaurant.com

Big Papa Gyro

4925 University Dr. NW

Huntsville, AL 35816

BigPapaGyro.com

Bravo! Italian Kitchen

401 The Bridge Street

Huntsville, AL 35806

BravoItalian.com

ABOUT RESEARCH PARK

The City of Huntsville has the second largest research park in the nation, and the fourth largest in the world. Cummings Research Park is home to over 300 companies, and is one of the world's leading science and technology business parks. CRP hosts a mixture of Fortune 500 companies, local and international high-tech enterprises, U.S. space and defense agencies, thriving business incubators and competitive higher-education institutions like The University of Alabama in Huntsville (UAH). CRP is a vibrant community that includes shopping districts, and various apartment complexes and neighborhoods.

Thornton Research Park, (pictured left) is a part of the Cummings Research Park West area, and is a development of the UAH Foundation.

RESEARCH PARK

ATTRACTIONS

SHOPPING & ENTERTAINMENT

Bridge Street Town Center

365 The Bridge Street NW

Huntsville, AL 35806

BridgeStreetHuntsville.com

Bridge Street Town Center is an open-air shopping complex with a variety of restaurants, stores, and a movie theatre. The Westin hotel is an anchor point for the mall, and the old-world architecture of the main green way adds a European charm to the shopping experience at Bridge Street. You can shop at stores like Anthropologie, Oxford Street Menswear, Mountain High Outfitters, Pandora, Belk, or check what's playing at the Cinemark movie theatre. From musicians referred to as pavement performers, to a carousel by the lake, there is always something to see, something to do, something to watch, something to eat, and something to buy at Bridge Street.

Mid City District

5909 University Dr.

Huntsville, AL 35806

MidCityDistrict.com

The Mid City district of Research Park is home to a variety of entertainment venues and recreational activities. From TopGolf to the Orion Amphitheater, there is something for everyone at Mid City. Stop by The Camp for good food and live music, or visit High Point Climbing and Fitness to do some rock climbing. Mid City is also home to places like Trader Joe's, Dave & Buster's, and Stars & Strikes.



The Carousel, Bridge Street Town Center



SPACE & ROCKET CENTER

DINING

LOCAL FAVORITES

Blue Plate Cafe

3210 Governors Dr. SW
Huntsville, AL 35805
BluePlateCafe.com



Taqueria El Cazador

3414 Governors Dr. Ste. 530
Huntsville, AL 35805
Stovehouse.com/Directory

Seoul Good Chicken

3414 Governors Dr. Ste. 510
Huntsville, AL 35805
SeoulGoodChicken.com

Earth and Stone

2600 Clinton Ave. W
Huntsville, AL 35805
Campus805.com/Directory

Rock N Roll Sushi

2500 Clinton Ave. Ste. B
Huntsville, AL 35805
RockNRollSushi.com

Pizzelle's Confections

2500 Clinton Ave. Ste. D
Huntsville, AL 35805
PizzellesConfections.com

Stanlieo's Sub Villa

605 Jordan Ln. NW
Huntsville, AL 35816
Stanlieos.net

Poftà Bunà

2211 Seminole Dr. Studio 100
Huntsville, AL 35805
LoweMill.art/Culinary-Art

Dragon's Forge Cafe

2211 Seminole Dr. Studio 2073
Huntsville, AL 35805
LoweMill.art/Culinary-Art

Piper & Leaf

2211 Seminole Dr. Studio 151
Huntsville, AL 35805
PiperAndLeaf.com



ABOUT THE SPACE & ROCKET CENTER

“Home to Space Camp®, Aviation Challenge® Camp, Space Camp Robotics, and U.S. Cyber Camp, the U.S. Space & Rocket Center (USSRC) is the most comprehensive U.S. manned spaceflight hardware museum in the world. Its large rocket and space hardware collection is valued in the tens of millions of dollars. From a model of America's first satellite, Explorer I, to next generation space vehicles like Sierra Nevada's Dream Chaser, the museum showcases the past, present and future of human spaceflight. The U.S. Space & Rocket Center serves as the Official NASA Visitor Center for Marshall Space Flight Center and is an affiliate of the Smithsonian Institution.”

Excerpt from *RocketCenter.com*
The official USSRC website.

Lowe Mill
Arts & Entertainment

2211 Seminole Dr.
Huntsville, AL 35805
LoweMill.art

Lowe Mill Arts & Entertainment is home to over 200 artists and makers, and has 152 working studios, 7 galleries, and 4 performance venues.

Lowe Mill is open to the public Wednesday through Saturday. This historic building serves as a hub for the arts scene in Huntsville!



Stairwell 3, Lowe Mill Arts & Entertainment

SPACE & ROCKET CENTER

ATTRACTIONS

ACTIVITIES & ENTERTAINMENT

The U.S. Space & Rocket Center

1 Tranquility Base
Huntsville, AL 35805
RocketCenter.com

The U.S. Space & Rocket Center has a variety of attractions and exhibits. From the Intuitive Planetarium to the G-Force Accelerator or Moon Shot, the Space & Rocket center is truly an interactive way to learn more about the history of American spaceflight.

The Huntsville Botanical Gardens

4747 Bob Wallace Avenue
Huntsville, AL 35805
HsvBG.org

The Huntsville Botanical Garden is located on 118 acres of land adjacent to the Space & Rocket Center. The Botanical Garden is open all year long, and has seasonal exhibits like the Galaxy of Lights for the holiday season or the Scarecrow Trail during autumn. The Purdy Butterfly House is one of the nation's premier open-air butterfly habitats, and visitors are encouraged to meander through the butterfly house during peak butterfly season, from May to September.

Campus No. 805

2620 Clinton Ave. West
Huntsville, AL 35805
Campus805.com

Campus No. 805 has historically been a place of learning in Huntsville. The Stone Center building at the campus was originally home to the humble beginnings of UAH, then it became a high school, and then it became a middle school before closing its doors as a place of education in 2009.

Today, Campus No. 805 is the home of several breweries, restaurants, and entertainment venues. You can throw axes at Civil Axe, see a laser show at Rocket City Lasers, or play pinball to your heart's content at Ronnie Raygun's Pinball Arcade.

DOWNTOWN HUNTSVILLE

DINING

LOCAL FAVORITES

Sam & Greg's

116 South Side Square
Huntsville, AL 35801
SamAndGregs.com



The Poppy & Parliament

117 North Side Square
Huntsville, AL 35801
ThePoppyAndParliament.com

Pane e Vino Pizzeria

300 Church Street
Huntsville, AL 35801
PaneEVinoPizzeria.com

Melt

201 Jefferson St. N Ste. 1
Huntsville, AL 35801
ILoveMelt.com/Huntsville

Commerce Kitchen

300 Franklin Street SE
Huntsville, AL 35801
TheCommerceKitchen.com

Oshi Poke Bowl & Sushi

201 Jefferson St. Ste. 1
Huntsville, AL 35801
Oshi.com

Mazzara's Vinoteca

102 Gates Avenue
Huntsville, AL 35801
ChurchStreetFamily.com

Furniture Factory

619 Meridian Street
Huntsville, AL 35801
FurnitureFactoryHsv.com



Japanese Friendship Bridge, Big Spring Park

ABOUT DOWNTOWN HUNTSVILLE

The City of Huntsville has a long history, and Downtown Huntsville holds an integral piece of that history. In 1805, a Revolutionary War veteran and pioneer named John Hunt moved into the area now known as Big Spring Park. Shortly thereafter, a man by the name of Leroy Pope bought the land, and named the area Twickenham after an English village where his kinsman lived. After the war of 1812, the town was renamed Huntsville to honor John Hunt due to anti-British sentiment in the area.

Huntsville was the first capitol of Alabama, and in 1819, a constitutional convention was held, and the 44 delegates in attendance formed and signed a constitution for the new state. Today, you can visit Constitution Village in downtown Huntsville and learn more about the early days of Huntsville.

The Japanese Friendship Bridge, pictured below, is one of the gifts given by Japanese Major General Mikio Kimata. Kimata attended Redstone Arsenal's Ordinance Guided Missile School program from 1964-1966 while he was still a Lieutenant Colonel. As a thanks to the city for its hospitality, Kimata donated 60 Yoshino Cherry trees and the Friendship Bridge.

Today, Downtown Huntsville is thriving, and the vibrancy of the city can be felt and seen both during the day, and at night! There are plenty of things to do and places to eat downtown, so plan to make a day of it if you have the time, and enjoy the heart of Huntsville to the fullest.



The Historic Huntsville Depot

320 Church Street SW
Huntsville, AL 35806

EarlyWorks.com

The Historic Huntsville Depot is the oldest surviving railroad depot in Alabama. In 1855, the Memphis and Charleston Railroad was constructed through Huntsville. This railroad became the first railway to link the Atlantic seacoast to the lower Mississippi River. The Depot still stands, and while the museum is not currently giving tours, the depot grounds are open to the public.



DOWNTOWN HUNTSVILLE

ATTRACTIONS

ACTIVITIES & ENTERTAINMENT

Big Spring International Park

200 Church Street SW
Huntsville, AL 35801
Huntsville.org

Big Spring Park is build around the original water source of Huntsville. The park is home to the Huntsville Museum of Art, the Von Braun Center, and a variety of koi fish, and water fowl. The sprawling park located in the heart of downtown hosts music festivals, food truck competitions, and most notably, the Panoply Arts Festival in the spring of each year. The park is free, and open to the public, though you may have to pay for parking.

Propst Arena

700 Monroe St. SW
Huntsville, AL 35801
VonBraunCenter.org

Propst Arena is part of the Von Braun Center's large complex of entertainment venues, and is home to the Huntsville Havoc Hockey Team! The Huntsville Havoc are a part of the SPHL, an independent professional ice hockey minor league. If you are able to catch a Huntsville Havoc game, be prepared for a little chaos, ruckus, and a whole lot of havoc! There is never a dull moment on the ice when the Havocs are on the prowl.

The Huntsville Museum of Art

300 Church Street SW
Huntsville, AL 35801
HsvMuseum.org

The Huntsville Museum of Art was founded in 1970, and is home to 14 different galleries, and holds a permanent collection of over 3,200 objects, covering a variety of subjects, genres, materials, and cultures. Be sure to check the museum website before you go to see what is currently on display!.

NATURE LOVERS

OUR STATE PARKS & NATURE PRESERVES

Wheeler National Wildlife Refuge

3121 Visitor Center Rd.

Decatur, AL 35603

Fws.gov/Refuge/Wheeler

The Wheeler National Wildlife Refuge is located in Decatur, Alabama, and is a part of the National Wildlife Refuge System managed by the U.S. Fish & Wildlife Service. Wheeler National Wildlife Refuge was established in 1938 by FDR as a refuge and breeding ground for migratory birds. Wheeler is the first refuge ever superimposed on a hydro-electric impoundment. Today, the 35,000 acre refuge provides for a wide spectrum of wildlife, including: over 295 species of birds; 115 species of fish; 74 species of reptiles and amphibians; 47 species of mammals; 38 species of freshwater mussels; and 26 species of freshwater snails.

Chapman Mountain Nature Preserve

1263 U.S. Hwy 72 East

Huntsville, AL 35811

LandTrustNAL.org

The Chapman Mountain Nature Preserve is a part of the Land trust of North Alabama collection of nature trails and preserves. The preserve is a 740 acre property with 7 trails, a waterfall, an 18-hole disc golf course, and a Bird Blind & Habitat as the preserve is a stop on the Alabama Birding Trail.

Cathedral Caverns State Park

637 Cave Road

Woodville, AL 35776

AlaPark.com/Parks/Cathedral-Caverns-State-Park

If you have the time, and enjoy spelunking, Cathedral Caverns is the place to go! Located in Woodville Alabama, the Caverns are at least a 45 minute drive from the test range, but the trip is worth it! The cave tour lasts for about 90 minutes, and are given by tour guides, as self-guided tours are prohibited. After touring the cave, you can explore above ground on one of the park's four hiking trails, or get yourself a bag of gem and fossil seeded dirt, and sift through it at the mining flumes.

Monte Sano State Park

5105 Nolen Avenue
Huntsville, AL 35801

AlaPark.com/Parks/Monte-Sano-State-Park

Monte Sano has been on the list of tourist attractions for the area since the late 1800's. The park's name translates to "Mountain of Health" in Spanish, and during the 1870's sufferers of various illnesses flocked to Hotel Monte Sano to rest and recuperate on the mountain. Today, the trails, picnic areas, scenic overlooks, campgrounds, outdoor amphitheater, and planetarium attracts visitors from all across the nation.

WELCOME

MONTE SANO